

Name ..... Index No. .... / .....

511/3  
MUSIC  
Paper 3  
Oct./Nov. 2015  
2½ hours

Candidate's Signature.....

Date.....



THE KENYA NATIONAL EXAMINATIONS COUNCIL

05350047

Kenya Certificate of Secondary Education

MUSIC

Paper 3

2½ hours

**Instructions to candidates**

- (a) Write your name and index number in the spaces provided above.
- (b) Sign and write the date of the examination in the spaces provided above
- (c) Answer **all** the questions in this paper.
- (d) In question 1 choose either (a) or (b).
- (e) In question 4 choose **any two** of the questions numbered (a), (b), (c) and (d).
- (f) All answers must be written in the spaces provided.
- (g) **This paper consists of 16 printed pages.**
- (h) **Candidates should check the question paper to ensure that all the pages are printed as indicated and that no questions are missing.**
- (i) **Candidates should answer the questions in English.**

**For Examiner's Use Only**

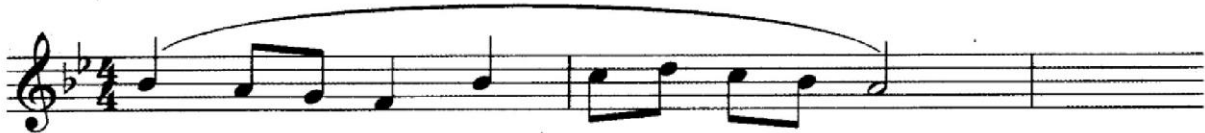
Section	Question	Maximum Score	Candidate's Score
A	1	12	
	2	20	
B	3	14	
	4	14	
	5	10	
	6	10	
C	7	20	
Total Score		100	



**SECTION A: BASIC SKILLS (32 marks)**

*Answer questions from all sections.*

- 1 **Either (a)** Continue the following opening to make a melody of sixteen bars for voice with a modulation to the subdominant before returning to the tonic key. Incorporate tempo variations and a triplet. (12 marks)



Handwritten musical staves for continuing the melody. There are seven sets of empty five-line staves provided for the student to write their answer.

**Or** (b) Compose a melody and set to it the text below.  
Add phrase marks to indicate cadencial points.

(12 marks)

*Oo! safari ya Mombasa  
huvutia watu hasa  
Oo! Mombasa ni Mombasa,  
ulo mji wa fanaka.*

A series of ten blank musical staves, each consisting of five horizontal lines, provided for the student to compose a melody and set it to the text above.

2 Harmonize the following melody for Soprano, Alto, Tenor and Bass (SATB).  
Choose appropriate chords from the following: I, II, IV, V and VI.

(20 marks)



Four sets of empty musical staves for harmonization, each consisting of four lines.

**SECTION B: HISTORY AND ANALYSIS (48 marks)**

**3 AFRICAN MUSIC**

- (a) (i) Name **three** Kenyan traditional drum ensembles and match each of them with the community that plays it. (3 marks)

.....  
.....  
.....  
.....  
.....  
.....

- (ii) Several factors influence the naming of traditional dances in the African society. Apart from the accompanying instruments, state **three** other factors. (3 marks)

.....  
.....  
.....  
.....  
.....  
.....

- (b) Outline **three** roles of music in communal work. (3 marks)

.....  
.....  
.....  
.....  
.....  
.....

- (c) (i) Outline **two** roles of props as a visual display in the performance of African traditional dances. (2 marks)

.....

.....

.....

.....

- (ii) Name any other visual display used in African traditional dances. (1 mark)

.....

.....

- (d) Name **two** African traditional melodic idiophones. (2 marks)

.....

.....

**4 WESTERN MUSIC**

Answer **any two** of the following questions (a), (b), (c) and (d)

- (a) **Claudio Monteverdi**

- (i) What was Monteverdi's nationality? (1 mark)

.....

- (ii) State **three** characteristic features of *The Coronation of Poppea* opera? (3 marks)

.....

.....

.....

.....

.....

.....

.....

(iii) Name **two** other operas by Monteverdi. (1 mark)

.....  
.....

(iv) Why were Monteverdi's works regarded as revolutionary? (2 marks)

.....  
.....  
.....  
.....

(b) **George Frederick Handel**

(i) What type of work is *Music for the Royal Fireworks*? (1 mark)

.....  
.....

(ii) For what purpose was *Music for the Royal Fireworks* written? (1 mark)

.....  
.....

(iii) State **two** reasons why the *Messiah* was well received by the public in London. (2 marks)

.....  
.....  
.....  
.....

(iv) Name **two** contemporaries of Handel. (1 mark)

.....  
.....

(v) With reference to Handel's style of composition, outline his treatment of:

I melody; (1 mark)

.....  
.....  
.....

II harmony. (1 mark)

.....  
.....  
.....

(c) **Edward Elgar**

(i) What was Elgar's nationality? (1 mark)

.....

(ii) Name his choral work which was based on the Roman Catholic text. (1 mark)

.....

(iii) For what medium was *Enigma Variations* written? (1 mark)

.....  
.....

(iv) Explain how Elgar embraced the use of technology in the presentation of his music between 1914 and 1925. (2 marks)

.....  
.....  
.....  
.....



(v) Outline any **two** stylistic features of Elgar's music. (2 marks)

.....  
.....  
.....  
.....

(d) **Sergei Prokofiev**

(i) Name Prokofiev's first symphony? (1 mark)

.....

(ii) What is a symphonic poem? (1 mark)

.....

(iii) Name the most popular symphonic poem by Prokofiev. (1 mark)

.....

(iv) Outline **four** characteristic features of Prokofiev's piano music (4 marks)

.....  
.....  
.....  
.....

**5 PRESCRIBED AFRICAN TRADITIONAL MUSIC**

*Mijikenda Ensemble* from Folk Music of East Africa.

- (a) Outline **four** features that characterise the singing. (4 marks)

.....

.....

.....

.....

.....

.....

.....

.....

.....

- (b) Describe the performance in relation to the following.

- (i) Texture; (2 marks)

.....

.....

.....

.....

.....

.....

.....

- (ii) Call and response; (1 mark)

.....

.....

.....

.....

.....

.....

(c) Outline **two** roles of the *Upatu* in the performance. (2 marks)

.....

.....

.....

.....

.....

.....

(d) Describe the ending of the performance. (1 mark)

.....

.....

.....

**6 PRESCRIBED WESTERN MUSIC**

**Recitative:** *“Behold I Tell You a Mystery”*  
and

**Air:** *“The Trumpet Shall Sound.”*  
From the *Messiah* by George F. Handel.

(a) Identify the chord formed in bars 1 and 2 of the voice part in the recitative. (1 mark)

.....

.....

.....

(b) With reference to bar numbers, describe the form of the *Air*. (4 marks)

.....

.....

.....

.....

.....

.....

- (c) State how imitation has been used from Bar 1 to 28 of the *Air*. (1 mark)

.....  
.....  
.....  
.....

- (d) State the meaning of the following devices used in the music, citing specific examples from the score.

- (i) Word painting; (2 marks)

.....  
.....  
.....  
.....  
.....  
.....

- (ii) Melisma. (2 marks)

.....  
.....  
.....  
.....  
.....  
.....

**SECTION C: GENERAL MUSIC KNOWLEDGE (20 marks)**

7 (a) Explain how each of the following factors influence the performance of African traditional music.

(i) Modern technology; (2 marks)

.....  
.....  
.....  
.....  
.....  
.....  
.....

(ii) Religion; (2 marks)

.....  
.....  
.....  
.....  
.....  
.....  
.....

(iii) Rural/Urban migration. (2 marks)

.....  
.....  
.....  
.....  
.....  
.....  
.....

(b) State the meaning of each of the following:

(i) Motif; (1 mark)

.....  
.....  
.....

(ii) Rondo; (1 mark)

.....  
.....  
.....

(iii) Ululation; (1 mark)

.....  
.....  
.....

(iv) The '48'. (1 mark)

.....  
.....  
.....

(c) State the meaning of each of the following in relation to the music industry.

(i) Copyright; (1 mark)

.....  
.....  
.....  
.....  
.....

(ii) Royalties; (1 mark)

.....

.....

.....

.....

.....

(iii) Piracy. (1 mark)

.....

.....

.....

.....

.....

(d) (i) State **two** roles of music in advertising. (2 marks)

.....

.....

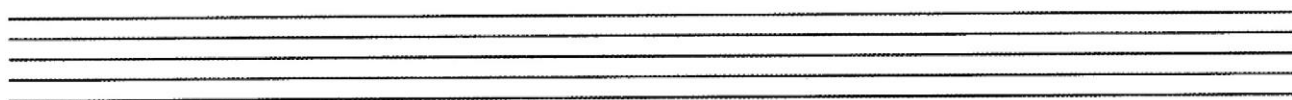
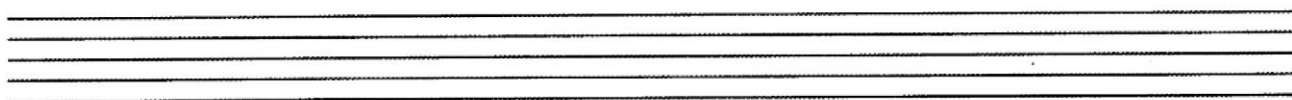
.....

.....

.....

.....

- (ii) The following melody is written for the clarinet in B flat. Write it in concert pitch. (5 marks)



**THIS IS THE LAST PRINTED PAGE.**

*Kenya Certificate of Secondary Education, 2015*

511/3

05350047