

Name Index No.....

441/2

HOMESCIENCE

Paper 2

(CLOTHING CONSTRUCTION)

July 2018

Time: 2½ Hours

FORM 4 END OF TERM 2 EXAM

CLOTHING CONSTRUCTION

Paper 2

July 2018

Time: 2½ Hours

A pattern of a girl's blouse is provided. You are advised to study the sketches, instructions and layout carefully before you begin the test.

Materials provided

1. Pattern pieces for the blouse.
 - A Blouse front
 - B Blouse back
 - C Sleeve
 - D Collar
 - E Pocket
 - F Sleeve binding and ties
 - G Sleeve opening facing
2. Light weight plain cotton fabric 65 cm long and 90 cm wide.
3. Sewing thread to match the fabric.

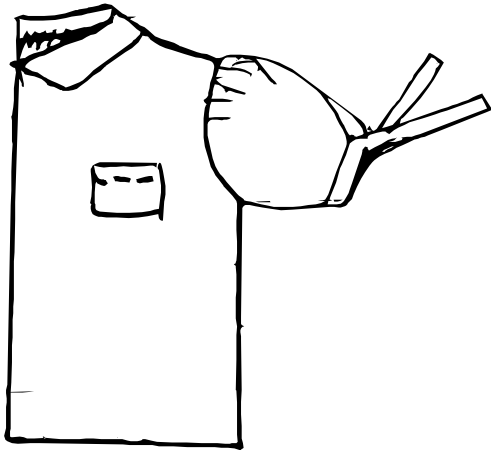
THE TEST

Using the materials provided, cut out and make the LEFT HALF of the blouse to show the following processes.

- a. Cutting out (11 marks)
 - b. Making of double stitched at the shoulder. (7 marks)
 - c. Making of the side seem using open seam. (7 marks)
 - d. Neatening of the blouse front facing. (3 marks)
 - e. Preparation and attachment of the collar and hemming at the back neck. (15 ½ marks)
 - f. Preparation and attachment of the patch pocket . (15 marks)
 - g. Preparation of a faced sleeve opening. (8 marks)
 - h. Joining of the under arm seam using unneatened open seam. (5 marks)
 - i. Binding of the lower edge of the sleeve and preparation of the tie ends. (5 marks)
 - j. Preparation and attachment of the sleeve. (7 marks)
- NB: DO NOT TRIM OR NEATEN THE ARMHOLE SEAM ALLOWANCE.
- k. Overall presentation. (6 ½ marks)

At the end of the experiment, firmly sew on to your work, on a single fabric a label bearing your name and index number. Remove the needles and pins from your work, then fold your work carefully and place it in the envelope provided. Do not put scraps of fabric in the envelope.

FRONT VIEW



BACK VIEW

