

Suggest any two parts of female reproduction

1. \_\_\_\_\_

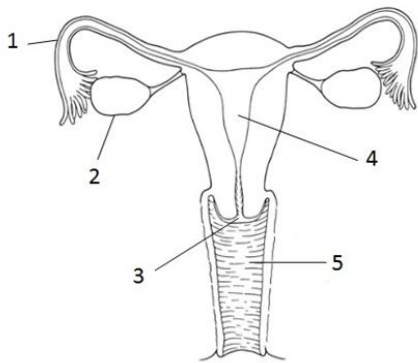
2. \_\_\_\_\_

Name any two parts of male reproduction

3. \_\_\_\_\_

4. \_\_\_\_\_

5 - 9. Label the parts of the female reproductive system

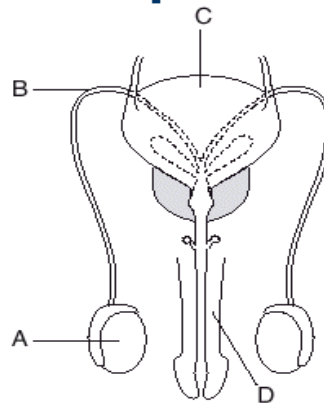


10. The tube that connects the ovary to the uterus is called the \_\_\_\_\_

11. The release of an ovum from an ovary is called \_\_\_\_\_

12. A fertilized ovum develops in the \_\_\_\_\_

13- 16 . Label the parts of a male reproduction system



17. Sperms pass to the outside of the penis through the \_\_\_\_\_

Highlight any two physical changes in girls.

18. \_\_\_\_\_

19. \_\_\_\_\_

State any two physical changes in boys

20. \_\_\_\_\_

21. \_\_\_\_\_

Highlight any two ways of preventing malaria

22. \_\_\_\_\_

23. \_\_\_\_\_

List the four types of teeth in the human body

24. \_\_\_\_\_

25. \_\_\_\_\_

26. \_\_\_\_\_

27. \_\_\_\_\_

Name the three organs found in the mouth.

28. \_\_\_\_\_

29. \_\_\_\_\_

30. \_\_\_\_\_

### Marking scheme

1. Ovary, fallopian tube,
2. Uterus, vagina,
3. Scrotum, urethra,
4. Testes, penis
5. 1.fallopian tube
6. 2.ovary
7. 3.Cervix
8. 4.uterus
9. 5. Vagina
10. Fallopian tube
11. Mensturation.
12. Uterus
13. A. testes
14. B. Sperm duct
15. C. Scrotum
16. D. Urethra
17. Urethra
18. Hip broadens, the menstrual flow begins,
19. breasts appear and continue to enlarge
- 20.Shoulders and chest broaden, beards grow,
21. experience wet dreams, voice becomes deeper.
- 22.Drain unwanted stagnant water, Sleeping under a mosquito net.
- 23.Covering any water storage.
- 24.Canines
- 25.Molars
- 26.Incsicors
- 27.Pre-molars
- 28.Tongue.
- 29.Teeth
- 30.Jaws